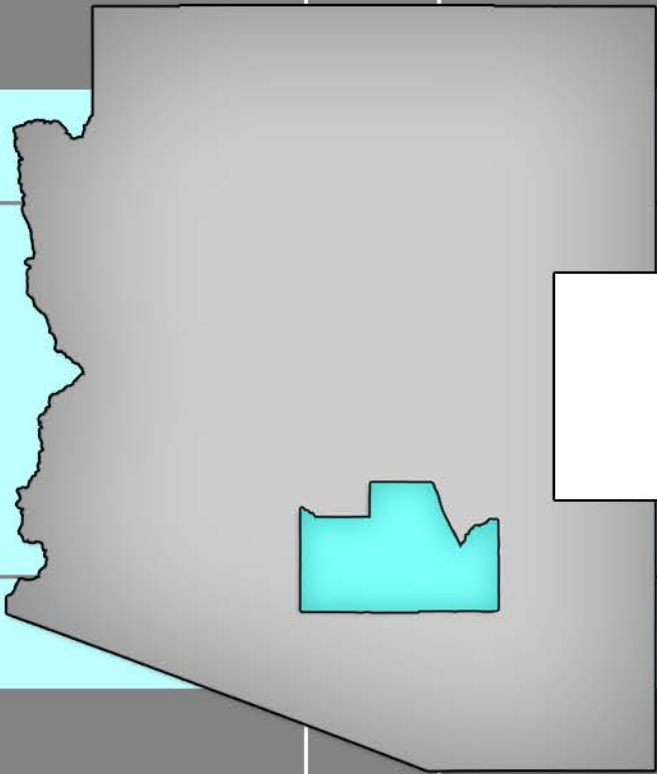


# **PINAL COUNTY ECONOMIC DEVELOPMENT ASSET INVENTORY**



**KEARNY/  
DUDLEYVILLE, AZ**

Prepared by:



## Pinal County Economic Development Asset Inventory: Kearny/Dudleyville, Arizona

---

### Economic Development Contact(s)

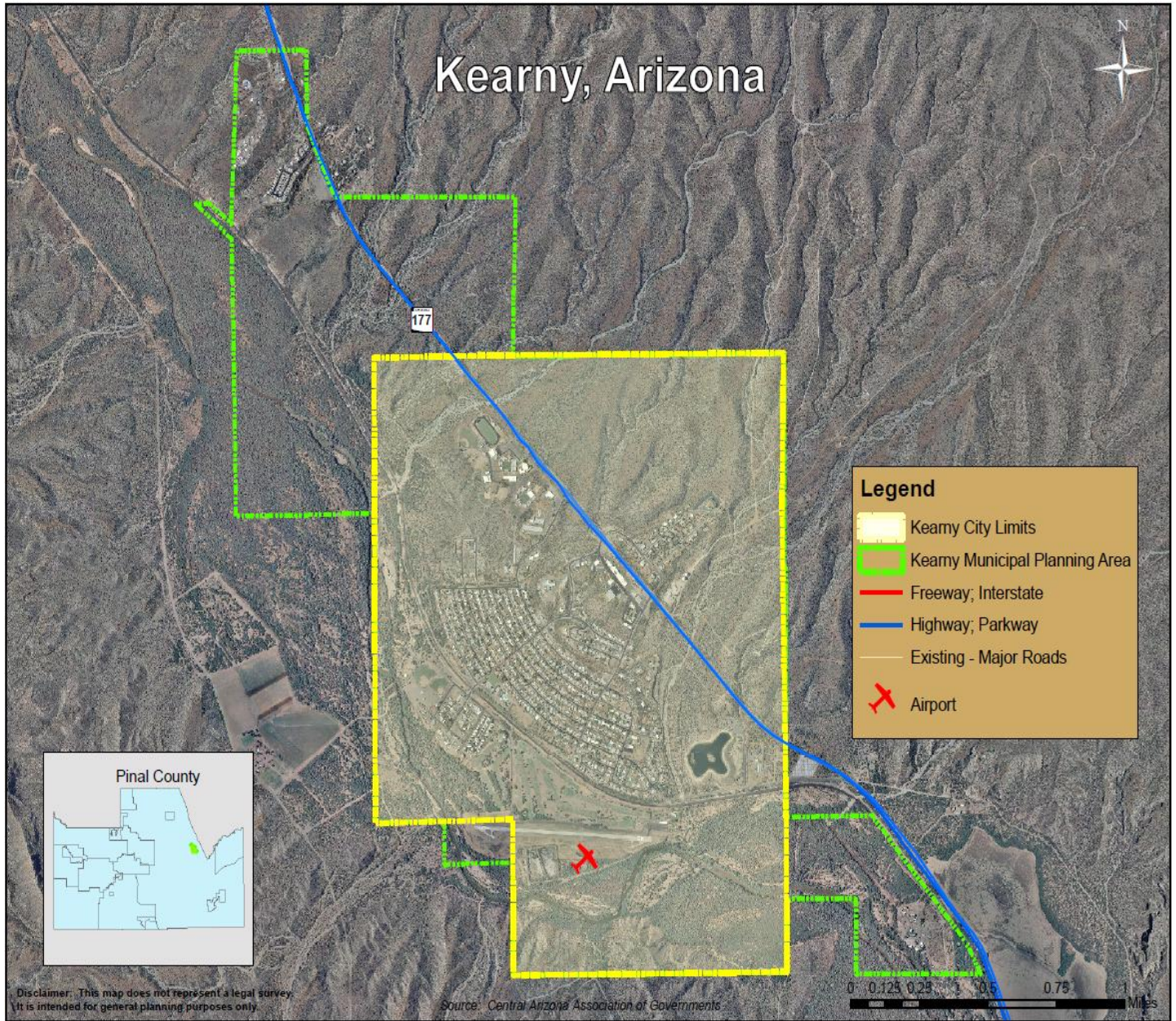
Gary A Eide, Town Manager (Contact for Kearny/Dudleyville)  
912-C. Tilbury Drive  
Kearny, AZ 85237  
520-363-5547  
geide@townofkearny.com

---

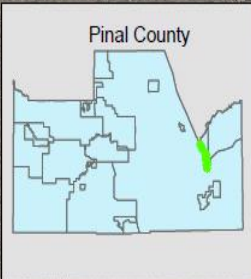
### City Description

Kearny/Dudleyville (2.28 sq. miles) Population is 4,906 in 2009. Kearny is named for General Stephen W. Kearny, leader of the “Army of the West” which explored along the Gila River in 1849-1850. He set up base camp near a site that would later bear his name. Kearny was a planned community built in 1958 for workers at the Kennecott Copper Company open-pit mine and reduction plant. This Pinal County community, located along the Gila River, is almost equidistant from Phoenix and Tucson. From Phoenix, take Interstate 10 east to state Highway 60, continue east on 60 to U.S. 60, east to Superior, turn south on state Highway 177. From Tucson, take U.S. 89 to Oracle Junction, turn northeast on state Highway 77 to Winkelman, turn northwest on state Highway 177.

# Boundaries

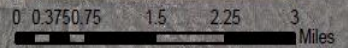


# Dudleyville, Arizona



**Legend**

- Dudleyville
- Freeway; Interstate
- Highway; Parkway
- Existing - Major Roads
- Airport



Disclaimer: This map does not represent a legal survey. It is intended for general planning purposes only.

Source: Central Arizona Association of Governments

## Industry

### A. Major industrial locations and expansions in the past 5 years:

- Ray Unified School Dist. #3
- Gordons Market IGA
- General Kearny Inn
- Town of Kearny
- Department of Economic Security
- Buzzy's Drive In
- Old Time Pizza
- Copper Area News Publishers

### B. Median Household Income, 2010:

- Kearny/Dudleyville - \$49,305 (Pinal Co.)

### C. Employment centers:

- None

---

## Natural Resources

### A. Agricultural companies:

- N/A

### B. Mining:

|  |
|--|
| American Smelting and Refining Company<br>64 ASARCO Avenue<br>Hayden, AZ85235<br>Phone: (510) 356-3801<br>www.asarco.com |
|--|

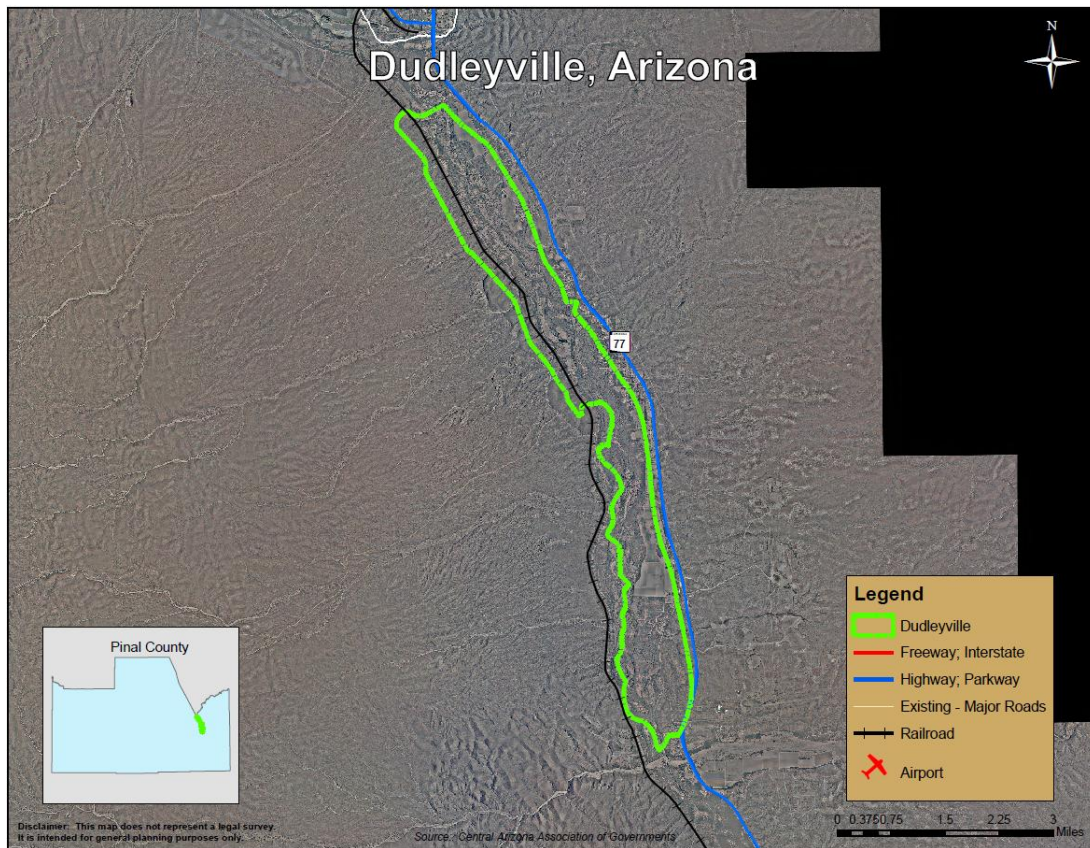
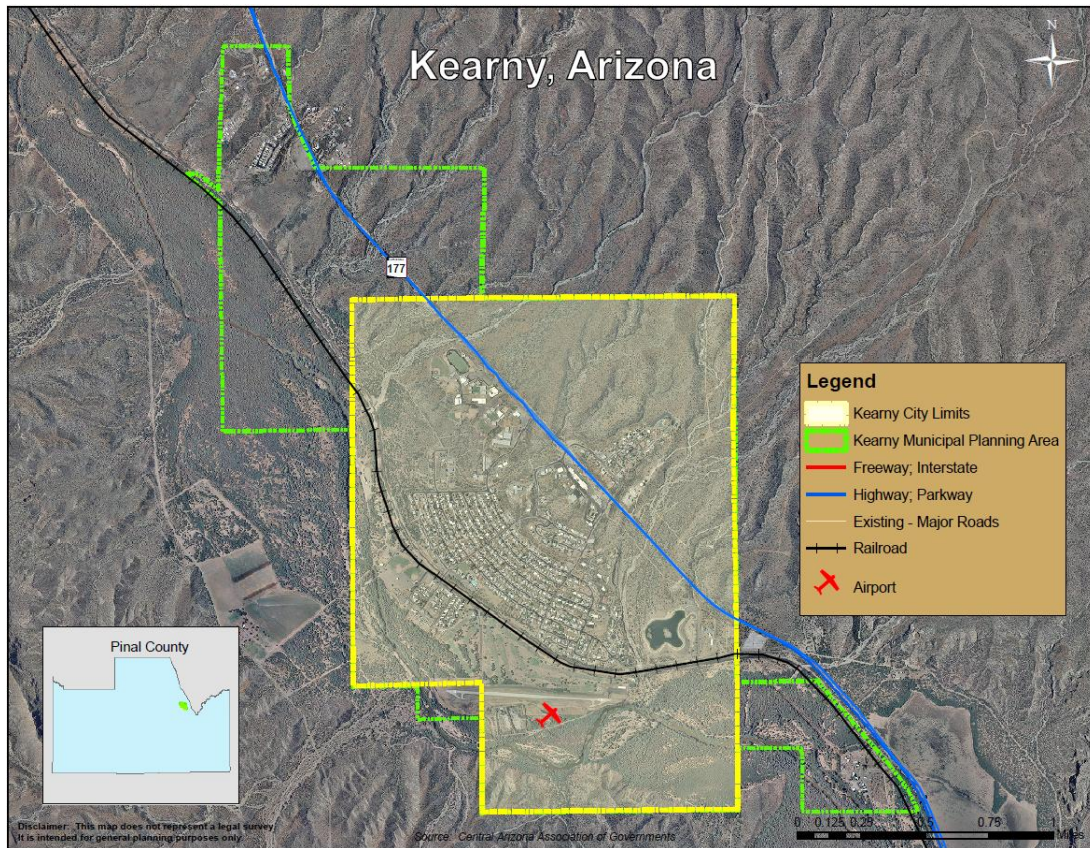
---

## Transportation

### A. Airport information:

- There is one airstrip with 3,400 ft long runway, with no lights and minimal emergency fuel

**B. Rail (rail lines and rail yards):**



- Copper Basin Railway, Gila View Park, Kearny, AZ 85137, Phone: (520) 363-7202

**C. Motor freight:**

- None

**D. Highways/freeways:**

|              |               |
|--------------|---------------|
| State Hwy 77 | State Hwy 177 |
|--------------|---------------|

**Utilities**

**A. Electricity:**

|  |
|--|
| Arizona Public Service<br>1992 Highway 88<br>Globe, AZ 85502<br>Phone: (928) 425-8024<br>www.aps.com |
|--|

**B. Propane:**

- None

**C. Natural gas:**

|  |
|--|
| Southwest Gas Corporation<br>5440 S. Russell Road<br>Globe, AZ 85501<br>Phone: (928) 425-8494<br>www.swgas.com |
|--|

**D. Sewer/septic:**

|  |
|--|
| Town of Kearny<br>912-C Tilbury Drive<br>Kearny, AZ 85237<br>Phone: (520) 363-5547 |
|--|

**E. Water:**

|  |
|--|
| Town of Kearny<br>912-C Tilbury Drive<br>Kearny, AZ 85237<br>Phone: (520) 363-5547 |
|--|

**F. Telecommunication:**

|  |
|--|
| Qwest Communications, Inc.<br>135 W. Orion Street<br>Tempe, AZ 85283<br>Phone: (602)-391-6277<br>www.Qwest.com |
|--|

**G. Internet:**

|  |  |
|--|--|
| CopperNet Systems, Inc<br>346 Alden Road<br>Kearny, AZ 85237<br>Phone: (520) 363-7551<br>www.coppernet.net | Qwest Communications, Inc.<br>135 W. Orion Street<br>Tempe, AZ 85283<br>Phone: (602)-391-6277<br>www.Qwest.com |
|--|--|

**H. Trash/Landfill:**

|  |   |
|--|---|
| Town of Kearny<br>912-C Tilbury Drive<br>Kearny, AZ 85237<br>Phone: (520) 363-5547 | Dudleyville Landfill/Waste Management<br>8195 N. Highway 77<br>Winkelman, AZ 85192<br>Phone: (520) 356-6181 |
|--|---|

---

**Financial Institutions**

**A. Banks:**

|  |
|--|
| Bank of the West<br>374 Alden Road<br>Kearny, AZ 85237<br>Phone: (520) 363-5681<br>www.bankofthewest.com |
|--|

**B. Credit Unions:**

|  |
|--|
| Ray Federal Credit Union<br>112 Williams Lane<br>Kearny, AZ 85237<br>Phone: (520) 363-5681<br>www.rayfcu.org |
|--|

## Education

### A. Public/private schools:

|  |  |  |
|--|--|--|
| Ray High School<br>701 N. Highway 177<br>Kearny, AZ 85237<br>Phone: (520) 363-5513<br>Fax: (520) 363-5517<br>www.ray.k12.az.us | Ray Primary School<br>651 S. Chastain Drive<br>Kearny, AZ 85237<br>Phone: (520) 363-5527<br>Fax: (520) 363-5017<br>www.ray.k12.az.us | Ray Elementary School<br>701 N. Highway 177<br>Kearny, AZ 85237<br>Phone: (520) 363-5511<br>Fax: (520) 363-5005<br>www.ray.k12.az.us |
|--|--|--|

### B. Vocational schools:

|  |
|--|
| ARC Vocational TRAINING<br>316 Alden Road<br>Kearny, AZ 85237<br>Phone: (520) 363-5581 |
|--|

### C. Colleges:

|  |
|--|
| Central Arizona College<br>80440 E. Aravaipa Road<br>Winkelman, AZ 85292<br>Phone: (520) 357-2019<br>www.centralaz.edu |
|--|

---

## Medical Services

### A. Hospitals:

- None

### B. Clinics:

|   |
|---|
| Kearny Community Medical Center<br>100 Tilbury Drive<br>Kearny, AZ 85237<br>Phone: (520) 363-5573 |
|---|

### C. Specialists:

- N/A

**D. Ambulance service:**

Omniflight/Native Air  
124 Tilbury Road  
Kearny, AZ 85237  
Phone: (520) 413-5023  
www.omniflight.com

---

**Media**

**A. Newspapers:**

Copper Basin News  
366 Alden Road  
Kearny, AZ 85137  
Phone: (520) 363-5554

**B. Radio:**

- N/A

**C. Television:**

- N/A

---

**General**

**A. Cell phone towers:**

- N/A

**B. Recycling:**

Town of Kearny  
912-C Tilbury Drive  
Kearny, AZ 85237  
Phone: (520) 363-5547

**C. Express Shipping: USPS, UPS, FEDEX, DHL, ETC.**

Ace Hardware  
346 Alden Road  
Kearny, AZ 85237  
Phone: (520) 363-7346

Old Time Pizza  
370 Alden Road  
Kearny, AZ 85137  
Phone: (520) 363-5523