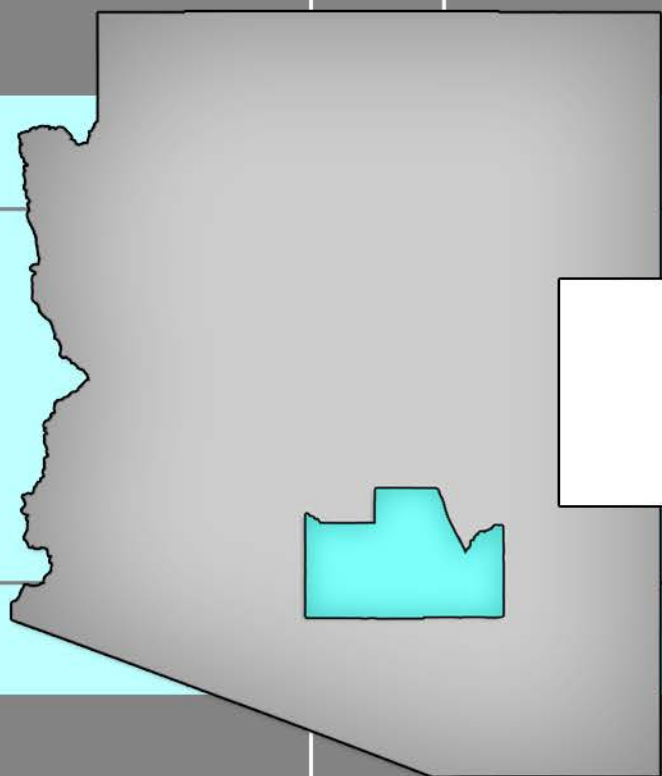


PINAL COUNTY ECONOMIC DEVELOPMENT ASSET INVENTORY



MAMMOTH, AZ

Prepared by:



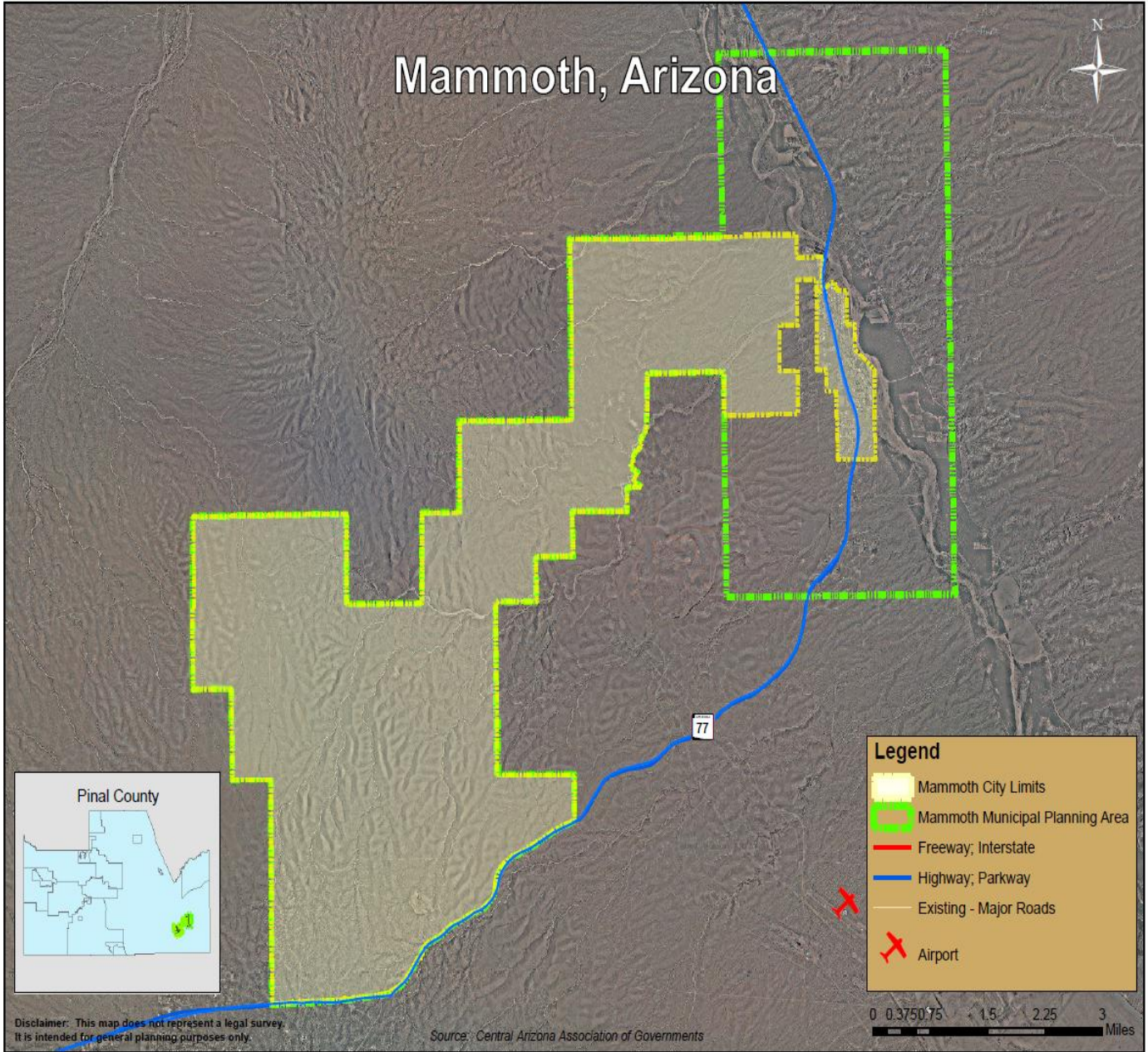
Economic Development Contact(s)

Rachelle Sanchez
Town of Mammoth, Town Clerk
125 N. Clark Street,
Mammoth, AZ 85618
520-487-2331

City Description

Mammoth (12 sq. miles) Population is 1,762 in 2009. Mammoth, in the San Pedro River Valley, is in southeastern Pinal County. Two other communities, Oracle and San Manuel, are located within 10 miles of Mammoth and make up the tri-community area. In 1883, Frank Schulz located the first mine in the Mammoth district. It was not possible to work the ores at the site, so a stamp mill for this purpose was built on the San Pedro River and named Mammoth. In 1895, the Mammoth Mine changed hands, and work stopped while a new system of milling was introduced. This was the beginning of the last gold mining revival in Arizona, except for a brief period during the Depression. Mammoth enjoyed renewed importance in 1936 when molybdenum production began.

Boundaries



Industry

A. Major locations and expansions in the past 5 years:

- Southwest Kidney Institute PLC
- La Casita Café
- Department of Economic Security
- Fresenius Medical Care
- Mammoth/San Manuel Unified School Dist.
- Circle K
- Town of Mammoth
- Pinal County Courthouse/ Health
- Mammoth Towing
- Corkers
- Tri Community Food Bank

B. Median Household Income, 2010:

- Mammoth - \$38,268

C. Employment centers:

- None

Natural Resources

A. Agricultural companies:

| |
|--|
| M7 Ranch 844 Ora Street Mammoth, AZ 85618 Phone: (520) 487-2135 |
|--|

B. Mining Operations:

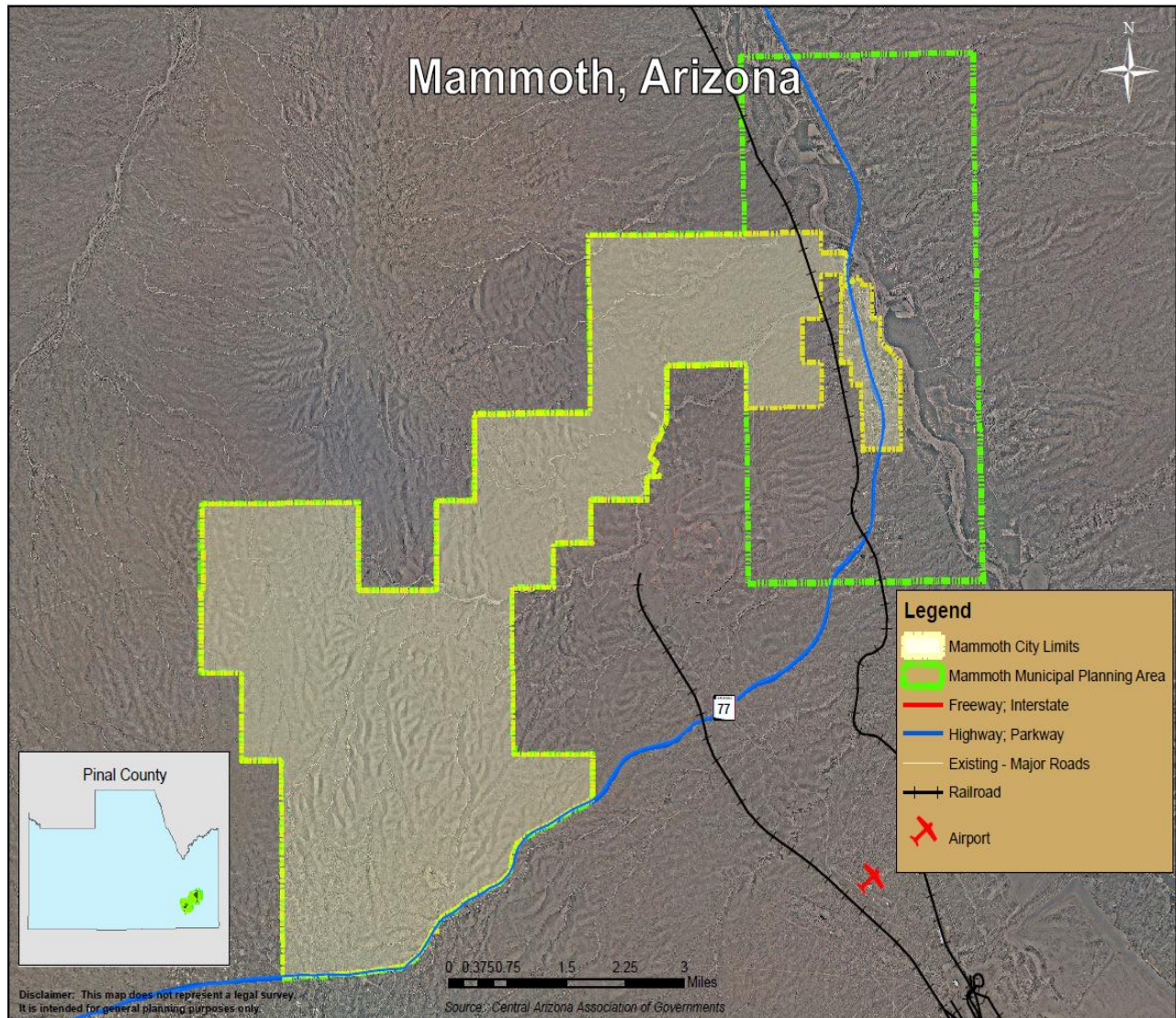
| | | |
|---|--|---|
| White Cliffs Mining 94294 River Road Mammoth, AZ 85618 Phone: (520) 385-4610 | Millrock Exploration Corp. P.O. Box 2007867 Anchorage, AK 99520 Phone: (760) 417-9979 | Bota Drilling Co. P.O. Box 687 Florence, AZ 85132 |
|---|--|---|

Transportation

A. Airport information:

- None

B. Rail (rail lines and/or rail yards):



C. Motor freight:

- None

D. Highways/freeways:

State Hwy 77

Utilities

A. Electricity:

Bureau of Indian Affairs
P.O. Box 250
Coolidge, AZ 85128
Phone: (520) 723-6209

B. Propane:

Corkers
732 N. Old Highway 77
Mammoth, AZ 85618
Phone: (520) 487-2411

C. Natural gas:

Southwest Gas Corporation
5440 S. Russell Road
Globe, AZ 85501
Phone: (928) 425-8494
www.swgas.com

D. Sewer/septic:

Mammoth Town Hall
P.O. Box 130
Mammoth, AZ 85618
Phone: (520) 487-2331

E. Water:

Mammoth Water Co.
Mammoth, AZ 85237
Phone: (520) 487-2331

F. Telecommunication:

Qwest Communications, Inc.
135 W. Orion Street
Tempe, AZ 85283
Phone: (602)-391-6277
www.Qwest.com

G. Internet:

| | |
|--|--|
| AZCI.net P.O. Box 10941 Casa Grande, AZ 85230 Phone: (866) 701-3278 www.azci.net | Qwest Communications, Inc. 135 W. Orion Street Tempe, AZ 85283 Phone: (602)-391-6277 www.Qwest.com |
|--|--|

H. Trash/Landfill:

| |
|---|
| Mammoth Town Hall P.O. Box 130 Mammoth, AZ 85618 Phone: (520) 487-2331 |
|---|

Financial Institutions

A. Banks:

- None

B. Credit Unions:

- None

Education

A. Public/private schools:

| |
|--|
| Ray High School 701 N. Highway 177 Kearny, AZ 85237 Phone: (520) 363-5513 Fax: (520) 363-5517 www.ray.k12.az.us |
|--|

B. Vocational schools:

- None

C. Colleges:

- None

Medical Services

A. Hospitals:

- None

B. Clinics:

Fresenius Medical Care
14786 Highway 77
Mammoth, AZ 85618
Phone: (520) 487-0150

C. Specialists:

- N/A

D. Ambulance service:

TRI City Med Ambulance
322 S. Avenue A
San Manuel, AZ 85631
Phone: (520) 623-4171

Media

A. Newspapers:

The San Manuel Miner
139 Eighth Ave
San Manuel, Arizona 85631
Phone: (520) 385-2266

B. Radio:

- N/A

C. Television:

- N/A

General

A. Cell phone towers:

- Alltell service in area

B. Recycling:

| | |
|---|---|
| Pinal County Building 116 S. Catalina Mammoth, AZ 85618 | Mammoth Town Hall P.O. Box 130 Mammoth, AZ 85618 Phone: (520) 487-2331 |
|---|---|

C. Express Shipping: USPS, UPS, FEDEX, DHL, ETC.

| | |
|--|---|
| U.S. Post Office 230 S. Main Street Mammoth, AZ 85618 Phone: (520) 487-2861 | Mammoth Town Hall P.O. Box 130 Mammoth, AZ 85618 Phone: (520) 487-2331 |
|--|---|