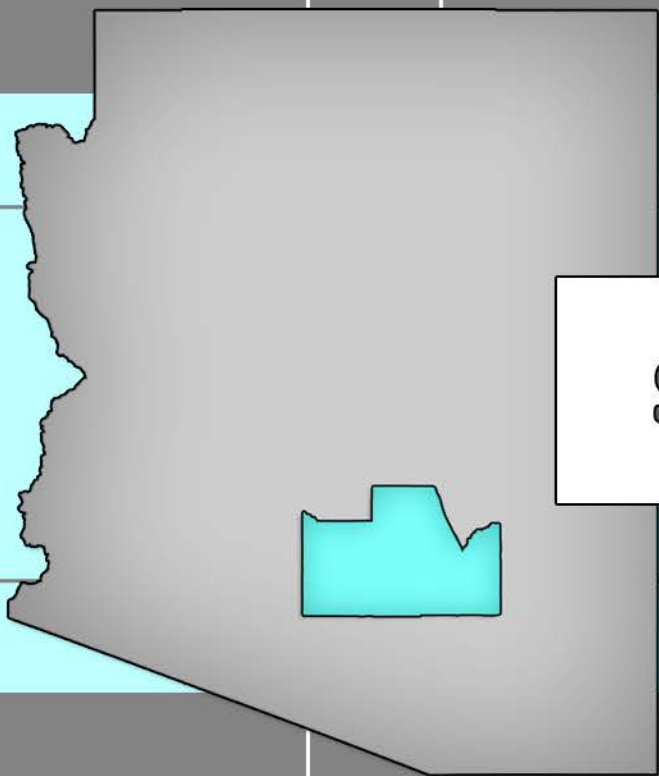


# **PINAL COUNTY ECONOMIC DEVELOPMENT ASSET INVENTORY**



## **SAN MANUEL, AZ**

Prepared by:



## Pinal County Economic Development Asset Inventory: San Manuel, Arizona

---

### Economic Development Contact(s)

Lynn Perez-Hewitt, M.Ed. (Economic Development Contact for Oracle, Saddlebrooke, San Manuel)  
Hewitt Consulting Enterprises, LLC  
415 N. Circle Place  
Oracle, AZ 85623  
520-896-3282  
perezhewitt@hceonline.com

---

### City Description

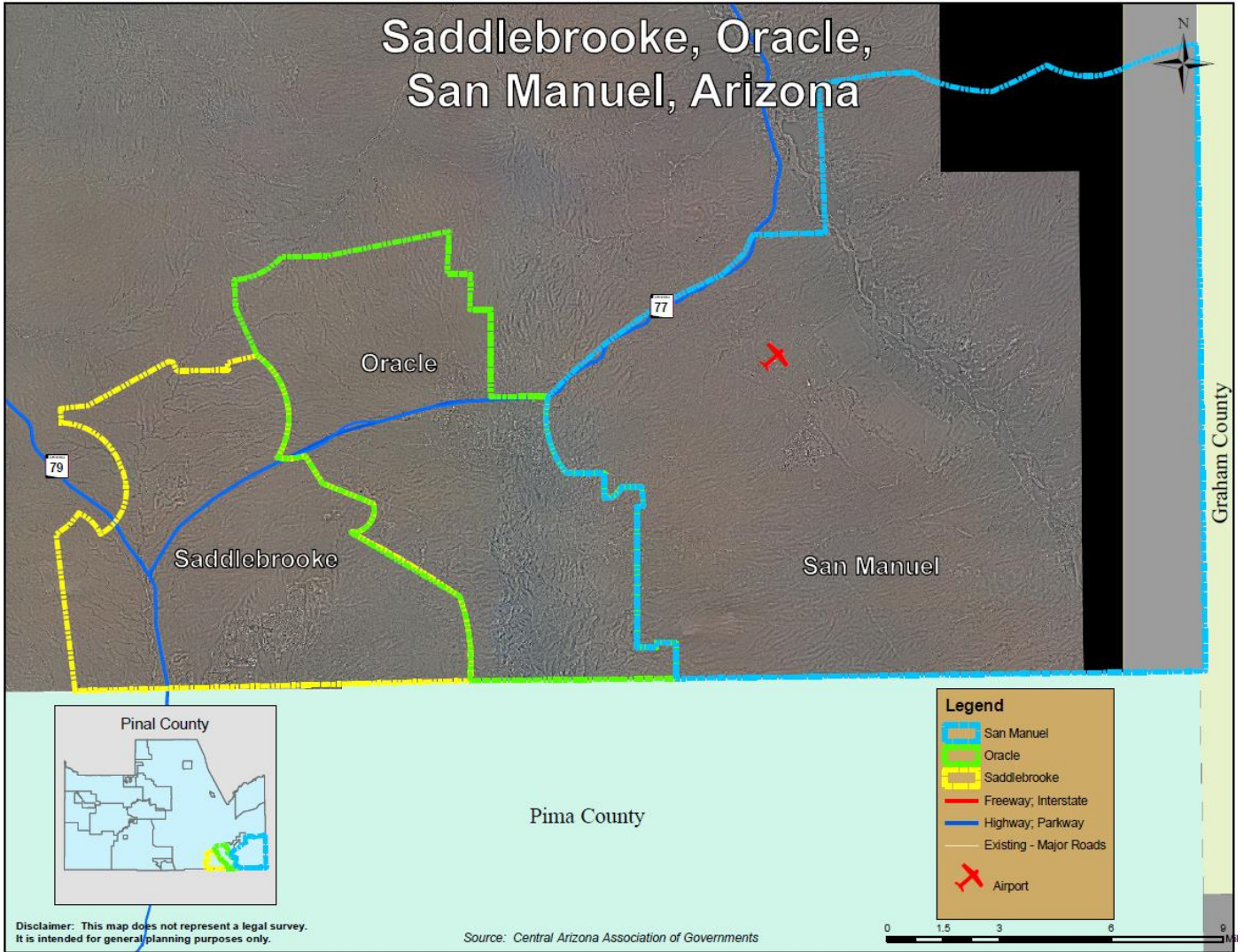
San Manuel, AZ is approximately 21 square miles.

Founded in 1952, San Manuel is in the broad San Pedro River Valley of southeastern Pinal County. The town is approximately 140 miles southeast of Phoenix and 45 miles northeast of Tucson at an elevation of 3,500 feet. Two other communities, Mammoth and Oracle are located within a 10 mile radius of San Manuel and make up the tri-community area. San Manuel was the first Del Web community in Arizona and is in unincorporated Pinal County.

There are a few retail shops operating in San Manuel and a flight school located at the airport. However, at this point, San Manuel is primarily a bedroom community.

San Manuel enjoys a mountainous setting near the many scenic attractions in southern Arizona's Sonoran Desert. One of the more popular areas is Mt. Lemmon in the Coronado National Forest just southwest of San Manuel. The spectacular Galiuro and Catalina Mountains and rolling desert have attracted various tv and movie companies to film on location in the area. Scenic drives in the area include Pinal Pioneer Parkway, which extends northwest to Florence, traversing a unique natural garden. Virtually all kinds of desert flora can be seen along the main route and easily accessible side roads. Mining and ranching activities in the area also provide a basic ecological system noted for its geological features. Biosphere 2 is 12 miles west. (Source: AZ Commerce Authority)

# Boundaries



## Industry

### A. Major locations and expansions in the past 5 years:

- IGA Grocery
- San Manuel Hardware Store
- San Manuel Thrift Store

### B. Median Household Income, 2010:

- Oracle/San Manuel/Saddlebrooke - \$62,175

### C. Employment centers:

- None
- 

## Natural Resources

### A. Agricultural companies:

- None

### B. Mining Operations:

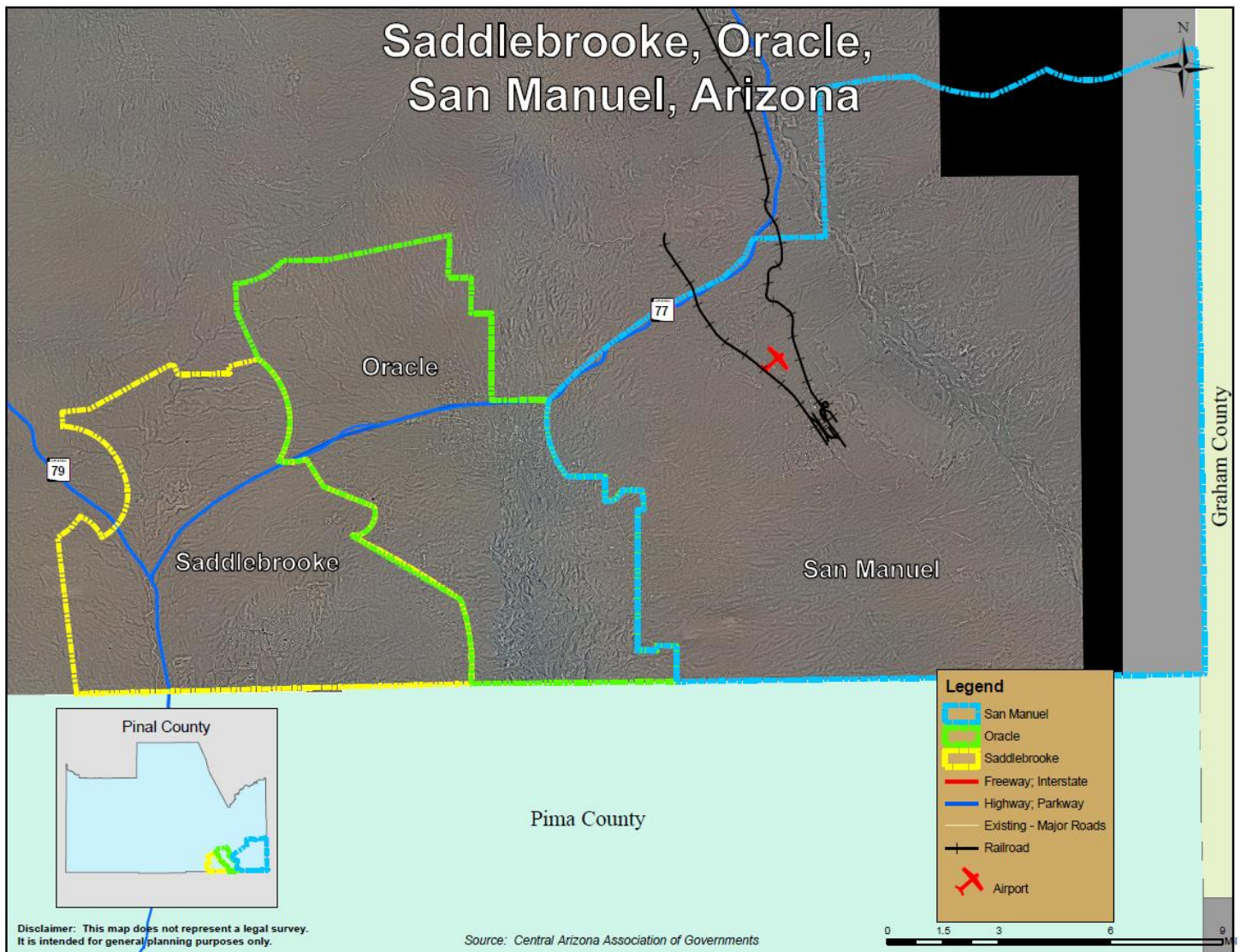
- None
- 

## Transportation

### A. Airport information:

San Manuel Airport HWY 76 SAN MANUEL, AZ 85631
------------------------------------------------------

**B. Rail:**



- Copper Basin Railway, Inc., P.O. Drawer I, Hayden, AZ 85235, Phone: (520) 356-7730, [www.rail-management.com](http://www.rail-management.com)

**C. Motor freight:**

- None

**D. Highways/freeways:**

State Highway 77

## Utilities

### A. Electricity:

APS  
402 S San Carlos St  
San Manuel, AZ 85631-1538  
(520) 385-2261  
[www.aps.com](http://www.aps.com)

### B. Propane:

<p>Amerigas 2455 W Wetmore Rd Tucson, AZ 85705-2018 Phone: 800-273-2230 <a href="http://www.amerigas.com">http://www.amerigas.com</a></p>	<p>Ferrellgas 4200 N Sullinger Ave Tucson, AZ 85705 Phone: 1-800-426-9185 <a href="http://www.ferrellgas.com">http://www.ferrellgas.com</a></p>	<p>Matlock Gas &amp; Equipment Co 1209 Jess Hayes Rd. Globe, AZ 85501 Phone: (928) 425-5521</p>
-----------------------------------------------------------------------------------------------------------------------------------------------------------	-----------------------------------------------------------------------------------------------------------------------------------------------------------------	-------------------------------------------------------------------------------------------------------------

### C. Natural gas:

Southwest Gas Corporation  
2200 North Central Avenue  
Phoenix, Arizona 85004  
Phone: (602) 861-1999  
<http://www.swgas.com/>

### D. Sewer/septic:

Pinal County  
Environmental Health  
31 N. Pinal Street, Bldg. F  
Florence, AZ 85132  
Phone: (520) 866-6864  
Fax: (520) 866-6007  
[www.pinalcountyaz.gov](http://www.pinalcountyaz.gov)

### E. Water:

Arizona Water Company  
420 Avenue "A"  
San Manuel, AZ 85631  
Phone: 520.385.2226  
<http://www.azwater.com/or.html>

**F. Telecommunication:**

Qwest Communications, Inc.  
135 W. Orion Street  
Tempe, AZ 85283  
Phone: (800) 244-1111  
[www.Qwest.com](http://www.Qwest.com)

**G. Internet:**

Qwest Communications, Inc.  
135 W. Orion Street  
Tempe, AZ 85283  
Phone: (800) 244-1111  
[www.Qwest.com](http://www.Qwest.com)

Localnet  
San Manuel, AZ 85631  
(520) 385-1136  
<http://www.localnet.com/>

Copper.net, Inc.  
P.O. Box 511  
Mount Vernon, OH 43050  
Phone: (520) 896-1002  
[www.copper.net](http://www.copper.net)

**H. Trash/Landfill:**

Waste Management  
5200 N. Ina Road  
Tucson, AZ  
Phone: (888) 964-9760  
[www.wm.com](http://www.wm.com)

---

**Financial Institutions**

**A. Banks:**

Bank of the West  
490 S Avenue A  
San Manuel, AZ 85631-1315  
Phone: (520) 385-2391  
<https://www.bankofthewest.com/>

**B. Credit Unions:**

Vantage West Credit Union  
141 8th Avenue  
San Manuel, Arizona  
Phone: (520) 385-4045  
[www.vwestcu.org](http://www.vwestcu.org)

## Education

### A. Public/private schools:

First Avenue Elementary School 914 N. First Avenue San Manuel, AZ 85631 (520) 385-4341 <a href="http://firstave.msmusd.org/">http://firstave.msmusd.org/</a>	Avenue B School 321 S Avenue B, San Manuel, AZ 85631 Phone: (520) 385-2242
San Manuel Jr/Sr High School 711 McNab Pkwy San Manuel, AZ 85631 (520) 385-2336 <a href="http://sanmanuelhs.msmusd.org/">http://sanmanuelhs.msmusd.org/</a>	PC Aircraft Flight School 1022 W Webb Dr, San Manuel, AZ, 85631 520-664-4812

### B. Vocational schools:

- None

### C. Colleges:

Closest colleges are in Tucson: University of Arizona 1401 E University Blvd Tucson, AZ 85721 Phone: (520) 626-5161 <a href="http://www.arizona.edu/">http://www.arizona.edu/</a>	Pima Community College 4905 E. Broadway Blvd. Tucson, AZ 85709-1010 Phone: (520) 206-4500 <a href="http://www.pima.edu">http://www.pima.edu</a>
--------------------------------------------------------------------------------------------------------------------------------------------------------------------------------------------------	-------------------------------------------------------------------------------------------------------------------------------------------------------------

---

## Medical Services

### A. Hospitals:

Oro Valley Hospital 1551 East Tangerine Road Oro Valley, Arizona 85755 Phone: (520) 901-3500 <a href="http://www.orovalleyhospital.com">http://www.orovalleyhospital.com</a>	Casa Grande Regional Medical Center 1800 E. Florence Blvd Casa Grande, AZ 85222 Phone: (520) 381-6300 <a href="http://www.casagrandehospital.com/">http://www.casagrandehospital.com/</a>
------------------------------------------------------------------------------------------------------------------------------------------------------------------------------------------	-------------------------------------------------------------------------------------------------------------------------------------------------------------------------------------------------------

**B. Clinics:**

Sun Life Family Health Center  
23 S McNab Pkwy  
San Manuel, AZ 85631  
Phone: (520) 385-2234  
<http://www.sunlifefamilyhealth.org/>

**C. Specialists:**

- N/A

**D. Ambulance service:**

San Manuel Ambulance Services  
322 S Avenue A  
San Manuel, AZ 85631-1363  
Phone: (520) 385-2151  
<http://www.ruralmetro.com/>

---

**Media**

**A. Newspapers:**

The San Manuel Miner  
139 Eighth Ave.  
San Manuel, AZ 85631  
Phone: (520) 385-2266  
<http://news.mywebpal.com/index.cfm?pnpid=864>

**B. Radio:**

- None

**C. Television:**

- None

---

**General**

**A. Cell phone towers:**

Alltell Communications  
86281 E Webb Court  
San Manuel, Arizona 85631

Gila River Cellular General Partnership  
103 W. G Ave  
San Manuel, Arizona 85631

**B. Recycling:**

Sherriff's Substation  
190 N Redington Rd  
San Manuel, AZ 85631-1129

**C. Express Shipping:** USPS, UPS, FEDEX, DHL, ETC.

U.S. Post Office  
430 South Ave A  
San Manuel, Arizona 85631