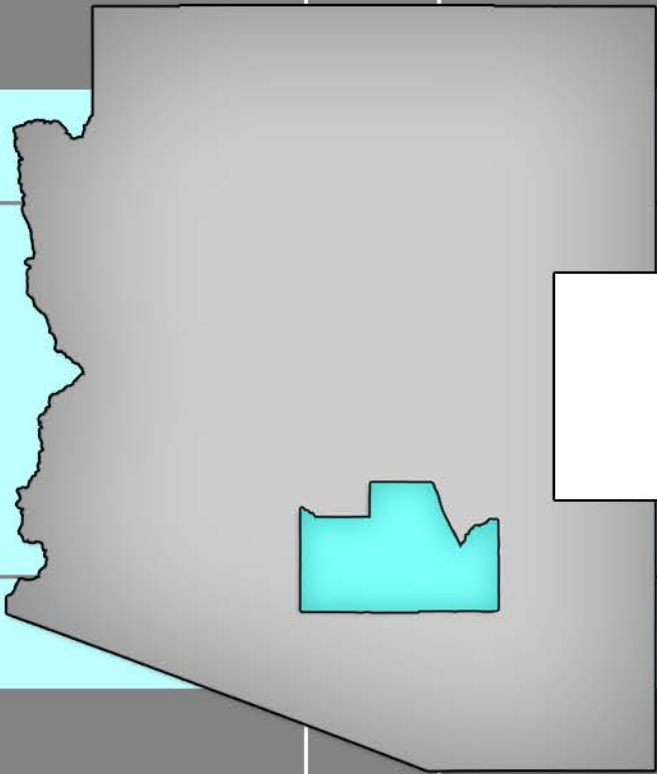


PINAL COUNTY ECONOMIC DEVELOPMENT ASSET INVENTORY



SUPERIOR, AZ

Prepared by:



Economic Development Contact(s)

Pete Casias, Chairman of Board of Chamber of Commerce
Superior Chamber of Commerce
230 W. Main Street
Superior, AZ 85173
520-689-0200

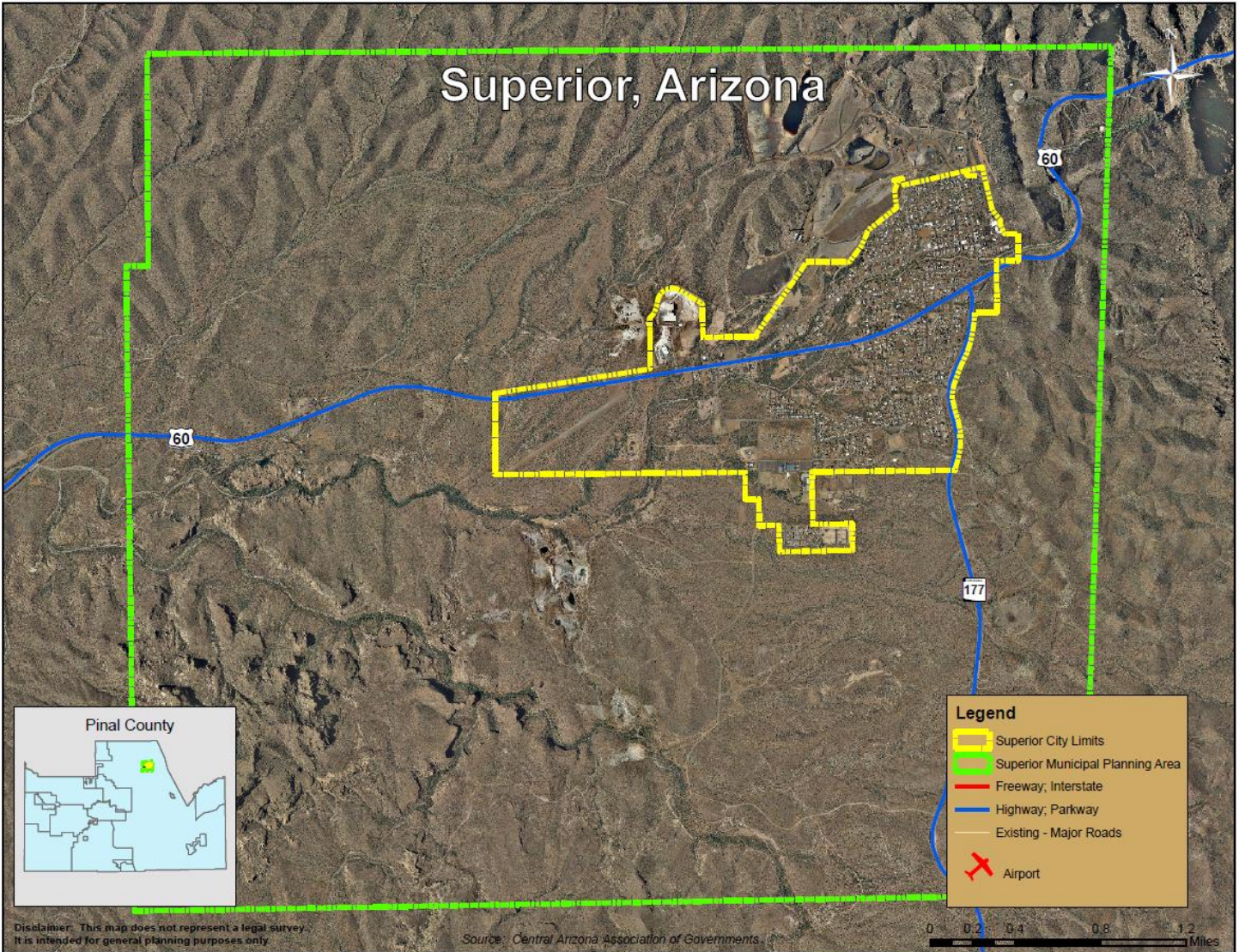
City Description

Superior, AZ is 1.9 square miles.

Founded in 1882, Superior is on U.S. 60 at the junction of state Highway 177. The town, in a mountainous setting, is surrounded by peaks such as 6,056-foot Iron Mountain. In 1900, George Lobb laid out the town, naming it Hastings. Mines dotted the hills around the prosperous Pinal County community. Stockholders in one of the successful silver mines lived in Michigan and named their mine Lake Superior. This mine fed the area economy and the community changed its name to Superior after this mine. The Magma Copper Company was established in 1910 and ran the Silver Queen Mine which became a great copper producer after its silver ran out. A smelter was built in 1924 and remained in operation for 47 years.

Major employment sectors in the Superior area include mining, and trade and service. The community is improving its trade and service sector in order to expand the income from tourism. Eco-Tourism is a large sector including hiking and horseback riding. Some trails include: Arizona Trail, Picket Post Mountain, Apache Leap, Legends of Superior Trail. Agriculture is significant to the Pinal County economy. Ranching is conducted in the surrounding areas. Along the famous 98-mile Apache Trail on state Highway 88, imposing saguaros, rugged mountains, desert vistas, and four lakes created by dams on the Salt River give the traveler a glimpse of Arizona's beauty and diversity. Nearby attractions include Resolution Copper Company Mine, the state's largest underground mine; Oak Flats campground; and Boyce Thompson Southwestern Arboretum, with more than 10,000 desert plants. Superior has identified three historic districts and the Superior Historical Society opened the home of Bob Jones (Arizona's sixth governor) as a museum. (Source: AZ Commerce Authority)

Boundaries



Industry

A. Major locations and expansions in the past 5 years:

- Resolution Copper
- Superior Marble
- Omya Gypsum

B. Median Household Income, 2010:

- Superior - \$36,174

C. Employment centers:

| |
|---|
| Copper Triangle Mining Services 18 N. Magna Avenue Superior, AZ 85273 Phone : (520) 689-5200 |
|---|

Natural Resources

A. Agricultural companies:

- None

B. Mining Operations:

| | | |
|--|---|--|
| Resolution Copper Mining, LLC 102 Magma Heights Superior, AZ 85173 Phone: (520) 689-9374 http://www.resolutioncopper.com | Omya Arizona, Inc. 6 N. Mesquite Road Superior, AZ 85173 Phone: (520) 689-2500 Fax : (520) 689-2961 www.omya-na.com | Superior Marble 2 N. Mesquite Road Superior, AZ 85173 Phone: (520) 689-8000 www.superiormarble.com |
|--|---|--|

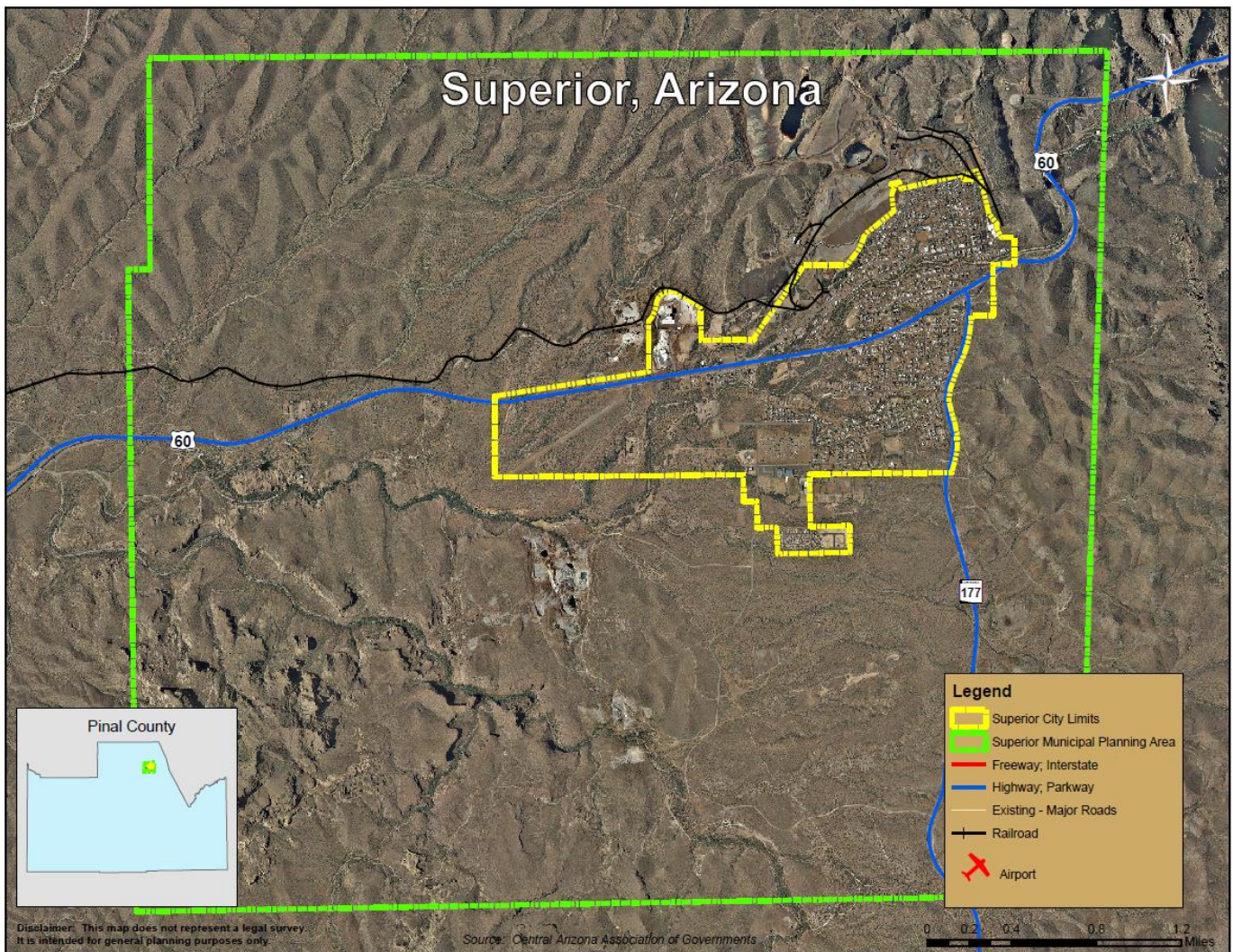
Transportation

A. Airport information:

Superior Municipal Airport-E81
State Route 60
Superior, AZ 85173
Phone: (520) 689-5752

Runway length: 3250 ft.

B. Rail (rail lines and/or rail yards):



- Resolution Copper Mining, LLC, 102 Magma Heights, Superior, AZ 85173, Phone: (520) 689-9374, <http://www.resolutioncopper.com>

C. Motor freight:

- None

D. Highways/freeways:

| | |
|------------------|-------------------|
| State Highway 60 | State Highway 177 |
|------------------|-------------------|

Utilities

A. Electricity:

| | |
|--|---|
| APS 5994 Electric Dr. Globe, AZ 85501 (928) 425-4451 www.aps.com | Salt River Project P.O. Box 52025 Phoenix, AZ 85072 Phone: (602) 236-2192 Fax: (602) 236-2006 www.srpnet.com |
|--|---|

B. Propane:

| | |
|--|--|
| Superior RV Park 1113 W. US Highway 60 Superior, AZ 85173 Phone: (520) 689-5331 | Superior Farmers Market 798 W. US Highway 60 Superior, AZ 85173 Phone: (520) 689-5845 |
|--|--|

C. Natural gas:

| |
|--|
| Southwest Gas Corporation 5440 S Russell Road Globe, AZ 85501-5306 Phone: 928-402-8229 www.swgas.com |
|--|

D. Sewer/septic:

| |
|--|
| Town of Superior 734 Main Street Superior, AZ 85273 http://www.superior-arizona.com/ |
|--|

E. Water:

Arizona Water Company
P. O. Box R
Superior, AZ 85173
Phone: (520) 689-2312
<http://www.azwater.com>

F. Telecommunication:

Qwest Communications, Inc.
135 W. Orion Street
Tempe, AZ 85283
Phone: (800) 244-1111
www.Qwest.com

G. Internet:

Verizon Hot Spot
Phone: (800) 567-6789
www.verizon.com

Coppernet Systems
P.O. Box 358
Kearny, AZ 85237
Phone: (888) 363-4267
<http://www.coppernet.net>

H. Trash/Landfill:

Allied Waste Management
4811 W. Lower Buckeye Road
Phoenix, AZ 85043
Phone: (602) 237-2078
Fax: (602) 237-2641
www.phoenix.disposal.com

Superior Transfer Station

Financial Institutions

A. Banks:

Bank of the West: Superior Branch
351 Main St
Superior, AZ 85173
Phone: (520) 689-2431
<https://www.bankofthewest.com/>

B. Credit Unions:

- None

Education

A. Public/private schools:

| | | |
|--|---|--|
| John F. Kennedy Elementary School 1500 Sunset Dr Superior, AZ 85273 (520) 689-3050 http://www.superior.k12.az.us | Superior Junior-Senior High School 100 Mary Drive Superior, AZ 85273 (520) 689-3100 | Headstart 150 N. Lobb Avenue Superior, AZ 85173 Phone: (520) 689-2812 |
|--|---|--|

B. Vocational schools:

| |
|--|
| Cobre Valley Institute of Technology P.O. Box 176 Superior, AZ 85273 Phone: 928-793-3276 http://www.cvit81.org |
|--|

C. Colleges:

- None

Medical Services

A. Hospitals:

- None

B. Clinics:

| |
|--|
| Cobre Valley Clinic 14 N. Magma Avenue Superior, AZ 85273 Phone: (520) 689-2423 |
|--|

C. Specialists:

- None

D. Ambulance service:

| |
|---|
| Town of Superior 271 Main Street Superior, AZ 85173 Phone: (520) 689-5671 http://www.superiorfiredept.com/ |
|---|

Media

A. Newspapers:

| | |
|---|--|
| Superior Sun 467 Main St. Superior, AZ 85273 Phone: (520) 689-2436 | Copper Country News 1776 Ash Street Globe, AZ 85501 Phone: (520) 425-0355 www.coppercountrynews.com |
|---|--|

B. Radio:

| |
|---|
| KZAI 89.9 FM P.O. Box 2118 Omaha, NE 68103 Phone: (888) 946-2471 |
|---|

C. Television:

- None

General

A. Cell phone towers:

| | |
|---|---------------------------|
| Alltell Communications, LLC Superior High School 100 Mary Drive Superior, AZ 85273 | Harding Elementary School |
|---|---------------------------|

B. Recycling:

Allied Waste Management
4811 W. Lower buckeye Road
Phoenix, AZ 85043
Phone: (602) 237-2078
Fax: (602) 237-2641
www.phoenix.disposal.com

C. Express Shipping: USPS, UPS, FEDEX, DHL, ETC.

U.S. Post Office
25 N High School Ave
Superior, AZ 85173-2652
Phone: (520) 689-5790